



23001 Industrial Blvd, Rogers, MN 55374 / 1-866-527-7637
www.motoalliance.com

DENALI Plow Mount MA11791 John Deere Gator RSX 850i

Thank you for purchasing a DENALI plow mount. You now own a premium, custom plow mount to allow you to use your plow with your UTV/SxS. Please note the following instructions and heed all warnings.

- Your UTV/SxS and/or plow system can cause death or injury. Please use caution and common sense when operating your unit.
- Read your Plow Operator Manual, your Winch Operator Manual, and all warning labels before operating your UTV/SxS.
- Operate your UTV/SxS at a walking speed with the blade installed. Do not exceed 5 mph (8 km/h) even with the blade up.
- Do not operate the UTV/SxS on slopes greater than 10 degrees with the plow installed.
- Always lower the plow to the down position before leaving your UTV/SxS unattended.

SEVERE INJURY OR DEATH MAY RESULT IF YOU ARE NEGLIGENT.

Please verify that all hardware and parts are included in your package.

MA11791

DENALI John Deere Gator RSX 850i Plow Mount

Kit Contents:

Part #	Qty	Description
1	1	MA11791 Plow Mount
2	1	RH "Z" Bracket
3	1	LH "Z" Bracket
4	6	3/8 x 1" Serrated Flange Bolt
5	6	3/8" Serrated Flange Nut
6	2	M8 x 35mm Serrated Flange Bolt

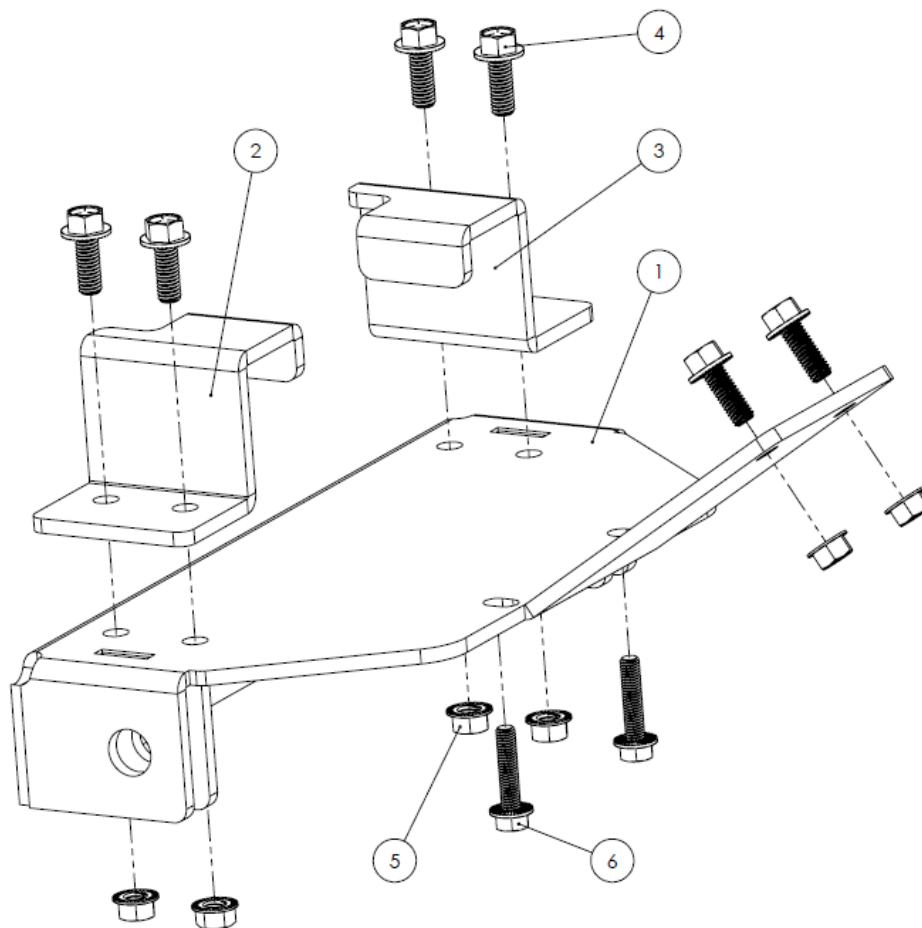


Figure 1

1. Remove the two (2) M8 bolts from the recessed slot in the skid plate below the differential. These will be replaced with the two (2) M8 x 35mm Serrated Flange Bolts (part #6) as shown circled red in Figure 3.
2. Hang the RH "Z" Bracket (part #2) and LH "Z" Bracket (part #3) on the square tube frame between the A-Arms as shown in Figure 2. Make sure the notched edge of the "Z" Bracket faces the rear of the machine.

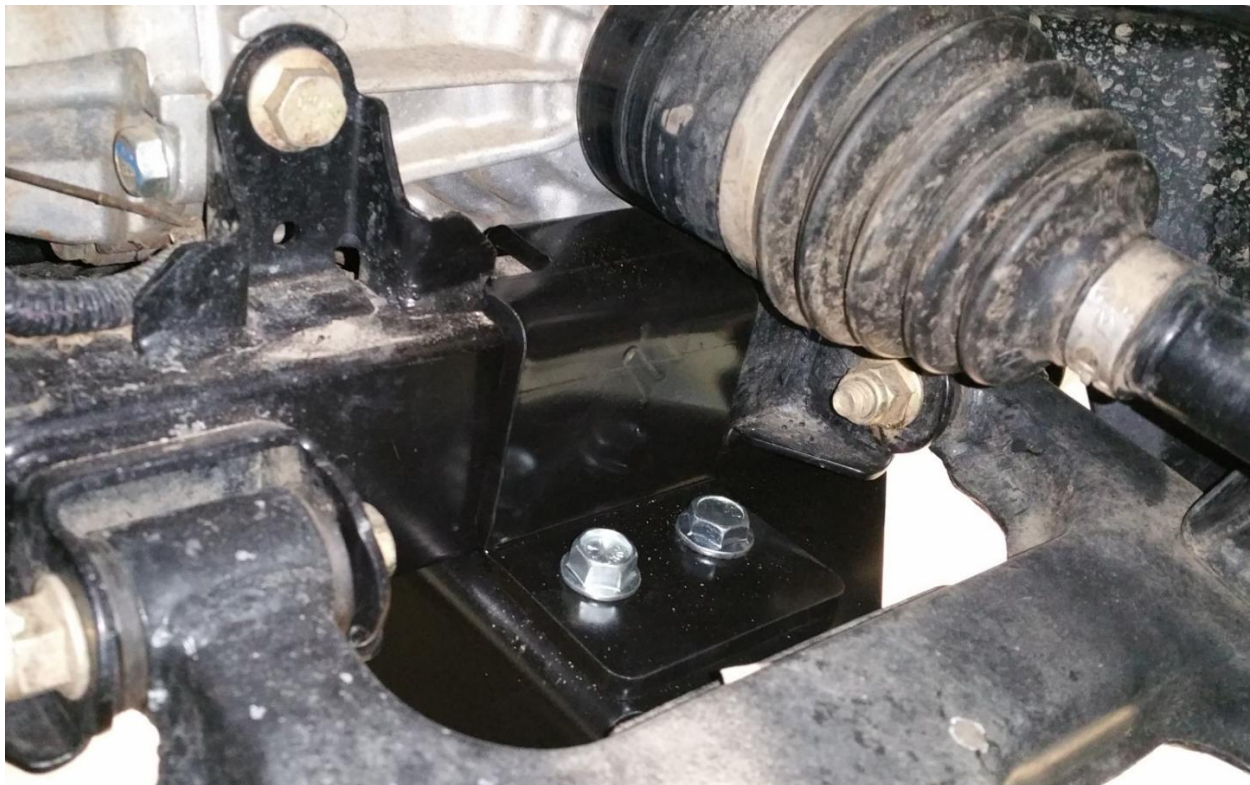


Figure 2

3. Hang two (2) of the 3/8 x 1" Serrated Flange Bolts (part #4) from the RH "Z" Bracket (part #2) and two (2) of the 3/8 x 1" Serrated Flange Bolts (part #4) LH "Z" Bracket (part #3).

MA11791

DENALI John Deere Gator RSX 850i Plow Mount

4. Lift the MA11791 Plow Mount (part #1) into place as shown in Figure 3. Secure with four (4) 3/8" Serrated Flange Nuts (part #5) but do not tighten down at this time.



Figure 3

5. Use the two (2) M8 x 35mm Serrated Flange Bolts (part #6) to secure the front of the MA11791 Mount Plate (part #1) into the frame using the threaded holes from the previously removed M8 hardware shown circled red in Figure 3.
6. Verify that the MA11791 Mount Plate (part #1) is square and tighten down the four (4) 3/8" Serrated Flange Nuts (part #5) and the two (2) M8 x 35mm Serrated Flange Bolts (part #6).

MA11791

DENALI John Deere Gator RSX 850i Plow Mount

7. Using the two holes at the top of the front tab of the MA11791 Mount Plate (part #1) drill two holes into the front plate of your bumper. Verify the location matches the two bolts circled red in Figure 4. Always check to make sure there won't be any interference before drilling, because bumpers can change from year to year and model to model.



Figure 4

8. Once the two holes are drilled out, secure the front tab of the MA11791 Plow Mount (part #1) with the remaining two (2) 3/8 x 1" Serrated Flange Bolts (part #4) and the remaining two (2) 3/8" Serrated Flange Nuts (part #5) and tighten down.
9. Attach the plow using the quick release pins included with DENALI Plow Kits.

After First Time Use

After the first use of your plow, check and retighten all hardware at least once, in case your frame has flexed and the Plow Mount has loosened.